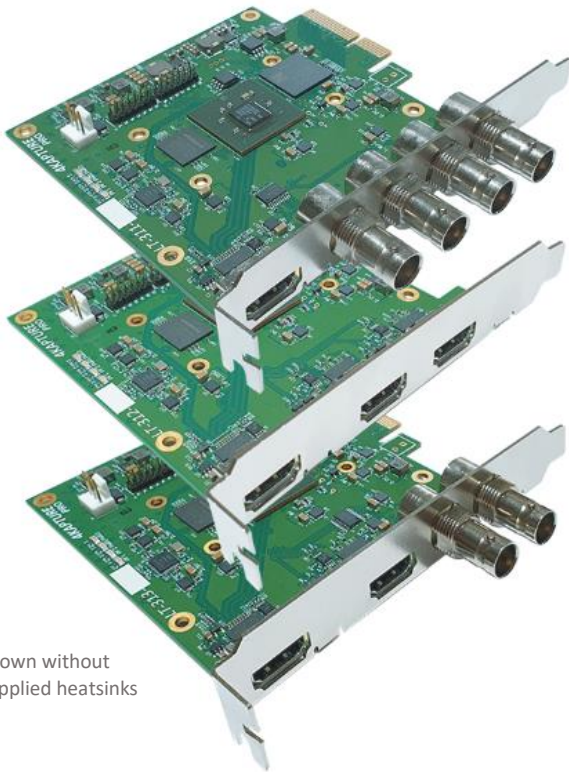


LT-310 Series pCapture 4Kp60 compatible SDI and HDMI acquisition and overlay solutions



Shown without supplied heatsinks

LT311, LT312, LT313 Features

- **Extreme low latency**, adapted for Medical, Aerospace, Industrial, Military and high-performance applications
- **Real time overlay** with text, image, shape(s) injection and alpha blending via HDMI 2.0 zero delay monitor output
- **Engineered for Long Term Support (LTS)**, availability >12 years* and ultra-high reliability in the field
- Resolution up to 4K (4096x2160) at 60fps
- Full 10-bit video processing
- **Enciris-Empowered API**** provides easy integration compatible with Windows, Linux, Direct Show, Python, C++, C# and Golang
- **Simultaneous multi-channel capture** with frame grabbing and overlay through PCIe 4xGen2 bus
- Color space conversion and Color adjustment
- Embedded audio extraction
- Auto detection of video input format
- Extended temperature versions available
- Board dimensions, 94 x 100 mm
- Power consumption, typically 12W
- Customizable software and hardware platforms for special requirements
- CE Certified and Medical CE 60601 Certified
- Designed and built in France

The Enciris LT310 family provides extreme low latency 4Kp60 ultra high-density video capture and has been designed specifically Long-Term Support (LTS) and long-term availability. This permits customers to do a single vendor approval process and integration for the product lifetime without having to continuously re-engineer any aspect of the application. The products are supported by a simple, powerful GUI, API and command line interface for easy and rapid application development.

Software Recording Solution

Enciris-Empowered API** provides easy integration support for:

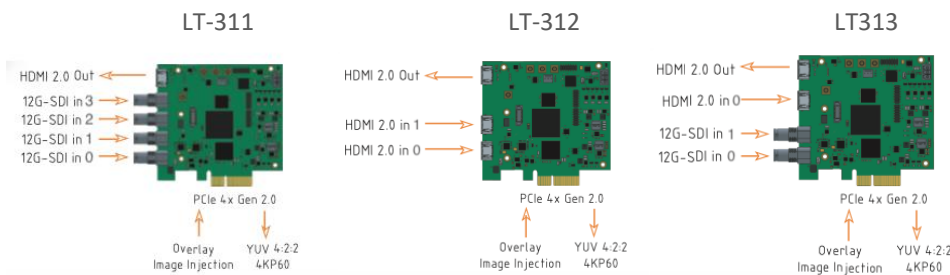
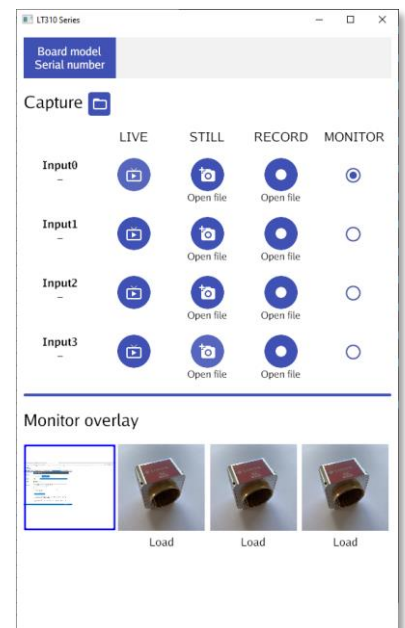
- Multichannel
- H.264, H.265, MP4, JPEG, PNG...
- Nvidia, Intel Quick Sync, AMD VCN and FFMPEG

Input Versions

LT-311: Four SDI's for SMPTE standard UHD/4Kp60 quad or single link

LT-312: Two standard HDMI 2.0 up to 4K60 (no HDCP)

LT-313: One standard HDMI (no HDCP) + TWO SDI's for SMPTE standard HD/3G/12G-SDI



*Although the product is designed for long term support Enciris, like all OEM manufacturers, is reliant on component supply
 **A typical customer application is less than 100 lines of code and Enciris provides example applications that allow cut and paste
 Document: LT-310 Series Product Brief, Version: 1.5, Date: 30/9/22, All information subject to change and update